



PSCAD v4.6 Software Setup – Quick Start (Certificate Licensing)

1. Introduction

This document provides quick start instructions for PSCAD™ X4 software, for the Professional and Educational Editions. Included are instructions to install PSCAD, activate [certificate licensing](#), and set up and test a [Fortran compiler](#) for use with PSCAD..

The boundaries imposed for the Professional and Educational Editions are specified in this [article](#).

For more detailed instructions, please refer to this [article](#).

2. Updates to this Software

Release notes for updates to this software may be viewed from this [webpage](#).

3. Requirements

The following are required for this setup:

- a. If using a V5 license to run X4, see Step 2 of this [article](#) to determine compatibility and configuration.
- b. [System requirements](#)
- c. Windows Administrator Privileges
- d. Use the Fortran Medic Utility to configure your machine to use certificate licensing as per this [article](#).

4. Obtaining Access to the Software and Certificate Licensing

Obtain access to PSCAD as follows:

- a. [Register](#) a MyCentre user account if you do not already have one.
- b. Contact your organization’s WorkGroup Administrator to obtain access.
Note: For a listing of your organization’s WorkGroup Administrators, please contact the MHI Sales Desk (sales@pscad.com).
- c. If you were provided a join code, [log in to MyCentre](#), and apply the join code. This will link your authorized licenses and downloads to your user account. Refer to this [article](#) for instructions
- d. If a download for PSCAD is not available in the *Downloads* tab of your [MyCentre user account](#), send an email using your facility’s e-mail domain to the [MHI Sales Desk](#) to request the software download.

5. PSCAD Installation Instructions

On the PSCAD machine, install PSCAD, as well as the GFortran compiler if required, as follows:

- a. Log in to [MyCentre](#), and download PSCAD from the “Downloads” tab.
See Step 4.d if the download is not available.
- b. Unzip and save the folder to a local drive (e.g. desktop).
- c. Open the unzipped folder, right-click on “setup.exe” and select “Run as administrator”.
Select “Yes” when prompted by the Windows User Account Control. The installer will launch.
- d. When prompted to select products for installation:
 - Select PSCAD
 - Select GFortran if you do not have the Intel compiler
(refer to Step 8 for information on selecting and setting up a compiler)

- e. When prompted to select the type of licensing, select “Certificate licensing”.
Note – For any installation issues, please refer to [Troubleshooting tips](#).
- f. If a Fortran compiler was installed, log out and log back in to your machine to apply the changes.
- g. If you will be using the Intel Fortran/Microsoft Visual Studio compiling software to build your projects (see Step 8), configure PSCAD appropriately as follows:
 - Configure PSCAD to detect more versions of Intel Fortran compilers as per this [article](#).
 - If using Visual Studio 2015 or newer, configure PSCAD as per Step 2 of this [article](#).**Note** - The default upon installation is for PSCAD to use Visual Studio 2013 and older.

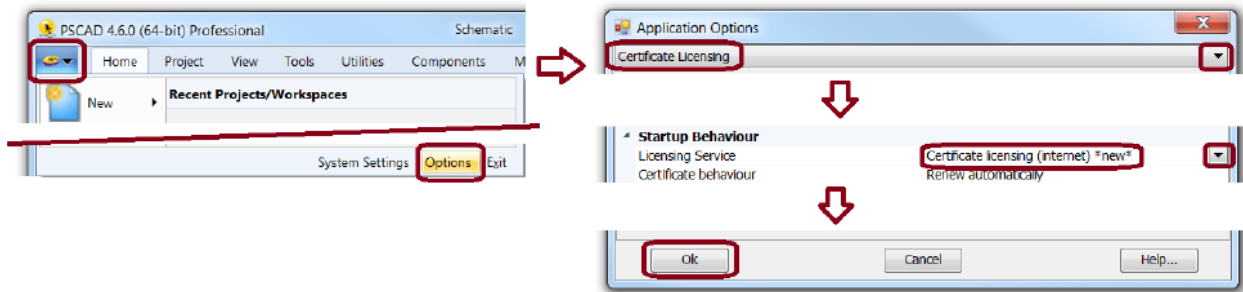
6. Launching PSCAD

Launch “PSCAD v4x” from the Windows Start menu.

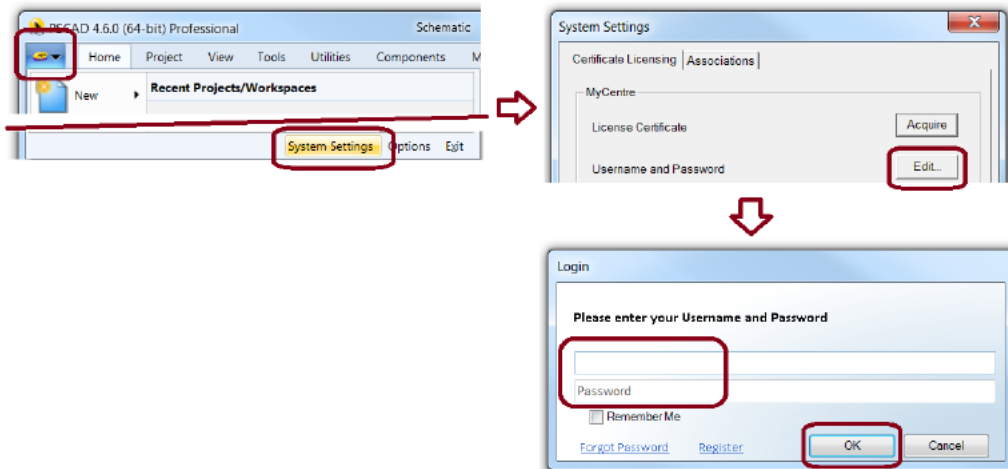
7. Activating a License

Activate the license as follows:

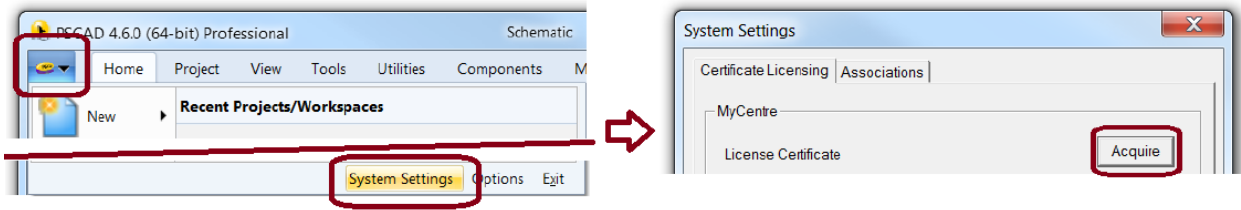
- a. Launch PSCAD as per Step 6.
- b. Configure PSCAD for certificate licensing as shown:



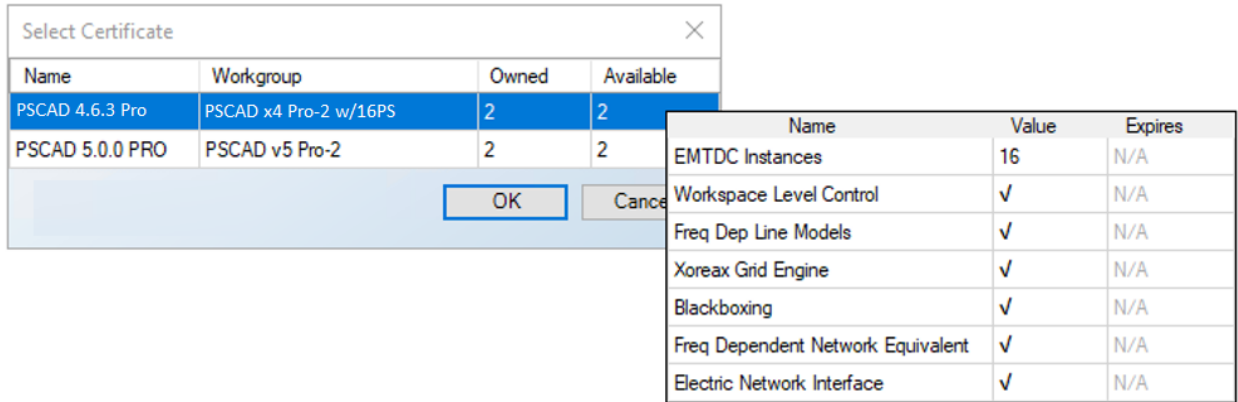
- c. If not already logged in, log in using your MyCentre login credentials as shown:



d. From the System Settings dialog, select *Acquire*:



e. If authorized for multiple workgroups or license types, a listing of the licenses will be displayed. Select the preferred license grouping, then select "OK".



Note: Hovering the cursor over a grouping displays the details about that license set.

- f. If available, a certificate for running this software will be checked out to you on your machine .
- g. Or, if license activation is unsuccessful, please check that the certificate licensing permissions have been set as per Step 4.d, above. If licensing issues persist, please review the Issues document posted to this [article](#). If the matter is not resolved, please send in the following to our [support desk](#): The licensing log file and the Fortran Medic log file as per Steps 3 and 4 of this [article](#)
- h. If multiple users will be sharing this license, PSCAD should be configured to always return the certificate back to the server whenever it is closed as per this [article](#).

8. Selecting, Setting up, and Testing your Compiler

Information on selecting, setting up and testing your compiler for building your PSCAD projects can be viewed from this [topic](#).

If you have any compiler selection or setup questions, please forward your questions to our [support desk](#).

9. Returning Your License Back to the Server

Information on returning your license back to the server is available in this [article](#).

10. Resources for Using PSCAD

Resources for using this software are available in this [article](#).

We hope this information was helpful for setting up PSCAD and your Fortran Compiler. If you have any setup or usage questions, please contact support@mhi.ca.

Copyright © 2022 Manitoba Hydro International Ltd. All Rights Reserved.